

STONIMAGE

How to be A Global Leader in Services?

Many of us are facing after-sales trouble no matter private or governmental control company, time is invaluable and most worrying for us. Once the machine shut down, the production shut down either, and we start to lose money quickly and come to an operation crisis So what we do here?

- ◆ Fast Action in Services
- ◆ Unconditional Parts Supply
- ◆ Strong Professionalism

XINXIANG STONIMAGE TECHNOLOGY CO. LTD

新乡市石像科技有限公司

Tel: +86 373 5853611 +86 173 3736 9213

www.stonimagelift.com

Add: 1522#, Gongyuanguoji, Hongqi district, Xinxiang city, Henan, China

STONIMAGE

was founded at end of 2014, is a global brand and manufacturer of lifting equipment and material handling equipment, we owns the most professional engineering team, R & D center and manufacturing base with rich experience in lifting industry. We are working with full passion in continuous innovation and improving services level.

Currently, STONIMAGE is focusing on Innovation, Manufacturing and Supplying of various lifting equipment, transportation machinery and construction machinery, mainly as below:

- Ladder Lift, Solar Panel Lift, Glass and window lift, Glass trolley
- Cargo truck elevator, Fish elevator, Mountain cargo Lift
- Electric scaffold, Wall building platform
- Electric forklift, Brick stacker, Installation Forklift for Pipe/Panel
- Scissor lift, Retractable stairs, Belt conveyor
- Restaurant Meal elevator



- **Aerial Ladder Lift**
 - ✓ For Solar panel
 - ✓ For Glass/window/door
 - ✓ For Construction material

Aerial Ladder Lift

- ✓ For Solar panel / bracket
- ✓ For Glass/ window/ Gate / Sunlight Room / Window Frame etc.
- ✓ For Construction material / Cement / Sand / Tile / Glazed Brick / Barrel Paint etc.
- ✓ Cargo bag lift / Air Energy / Color Steel Tile / Water Proof Roll / Wooden Material etc.
- ✓ Any cargo lift inside / outside or in narrow space



- **Overturn Tray**
180° unload



Technical Data

| Model | Track length (m) | Max. vertical height (m) | Max. Load Capacity (kg) | Motor model/power | Standard section length (m) |
|--------|------------------|--------------------------|-------------------------|-------------------|-----------------------------|
| EL400 | 4 | 3~4 | 200 | PA800, 1300w | 0.5+3.5 |
| EL500 | 5 | 4~4.5 | 200 | PA800, 1300w | 0.5+3.5+1 |
| EL600 | 6 | 5~5.5 | 200 | PA800, 1300w | 0.5+3.5+2 |
| EL700 | 7 | 6~6.5 | 200 | PA800, 1300w | 0.5+3.5+3 |
| EL800 | 8 | 7~7.5 | 200 | PA800, 1300w | 0.5+3+3+1.5 |
| EL900 | 9 | 8~8.5 | 200 | PA800, 1300w | 0.5+3+3+2.5 |
| EL1000 | 10 | 8.5~9.5 | 200 | PA800, 1300w | 0.5+3+3+2+1.5 |
| EL1100 | 11 | 9~10.5 | 200 | PA800, 1300w | 0.5+3+3+3+1.5 |
| EL1200 | 12 | 10~11.5 | 200 | PA800, 1300w | 0.5+3*3pc+2.5 |
| EL1300 | 13 | 11~12.5 | 200 | PA800, 1300w | 0.5+3*3pc+2+1.5 |
| EL1400 | 14 | 12~13.5 | 200 | PA800, 1300w | 0.5+3*4pc+1.5 |
| EL1500 | 15 | 13~14.5 | 150 | 3000w | 0.5+3*4pc+2.5 |
| EL1600 | 16 | 14~15 | 150 | 3000w | 0.5+3*4pc+2+1.5 |
| EL1700 | 17 | 15~16 | 150 | 3000w | 0.5+3*5pc+1.5 |
| EL1800 | 18 | 16~17 | 150 | 3000w | 0.5+3*5+2.5 |
| EL1900 | 19 | 17~18 | 150 | 3000w | 0.5+3*5+2+1.5 |
| EL2000 | 20 | 18~19 | 150 | 3000w | 0.5+3*6+1.5 |

Note: the customized design / fabrication are acceptable in structure, dimension and functions.

Technical Notes:

- 1) Galvanized steel pipe, pipe size: 40mm*60mm,thickness1.6mm
- 2) Motor bracket: 0.5m
- 3) Speed :12-16m/min
- 4) Power supply: 220V AC 50HZ
- 5) Track length = Vertical height + 0.5~2 m
- 6) Support bar: supply one (1) pair as standard, others supplied by user depends on site condition.
- 7) Cross-bar buckle: according to model / length of lift.

Application 应用案例



• Window Lift



• Glass Lift



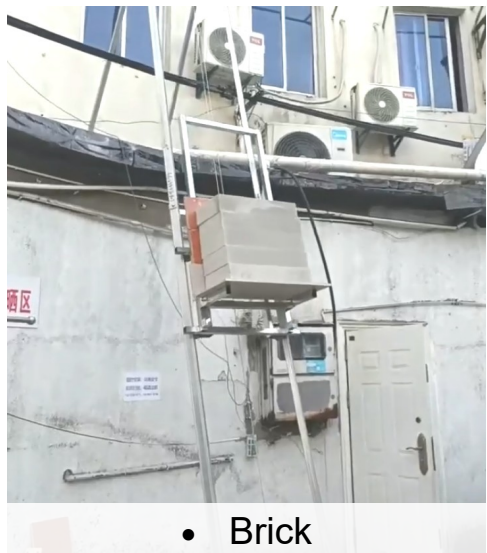
• Solar Panel



• Solar Panel Roof



• Sunlight Room



• Brick



• Water proof Roll



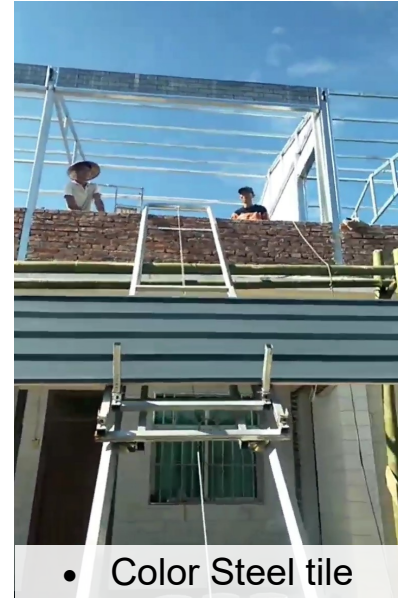
• Cargo Bag Lift



• Cement, Sand



• Air Energy



• Color Steel tile



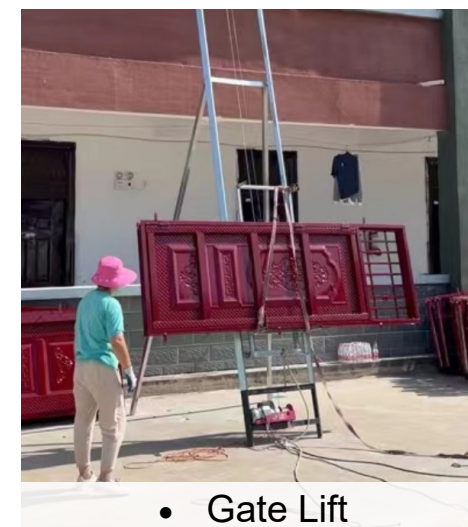
• Barrel Paint



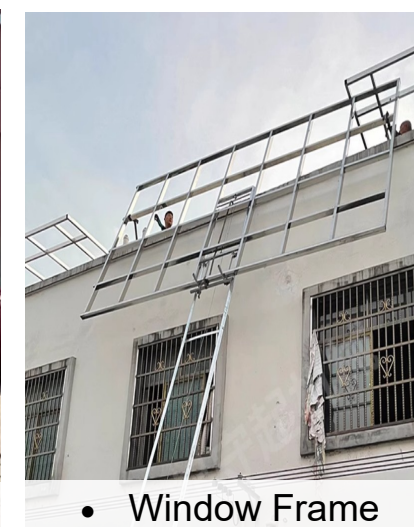
• Wooden Material



• Office Building



• Gate Lift



• Window Frame



• Tile, glazed brick